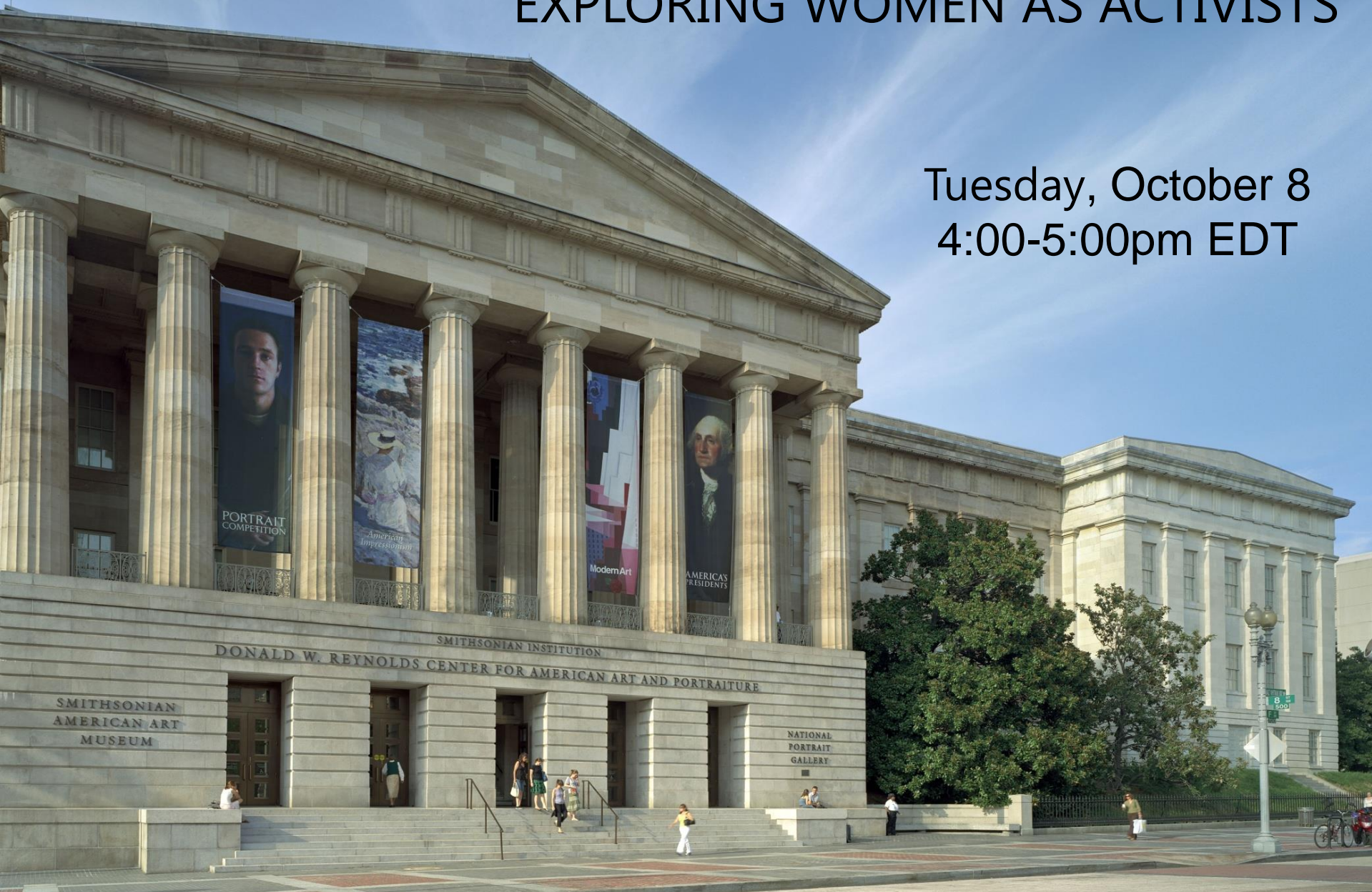


PERSISTING AND RESISTING: EXPLORING WOMEN AS ACTIVISTS

Tuesday, October 8
4:00-5:00pm EDT





National Portrait Gallery



Phoebe Hillemann
Teacher Institutes Educator
SAAM



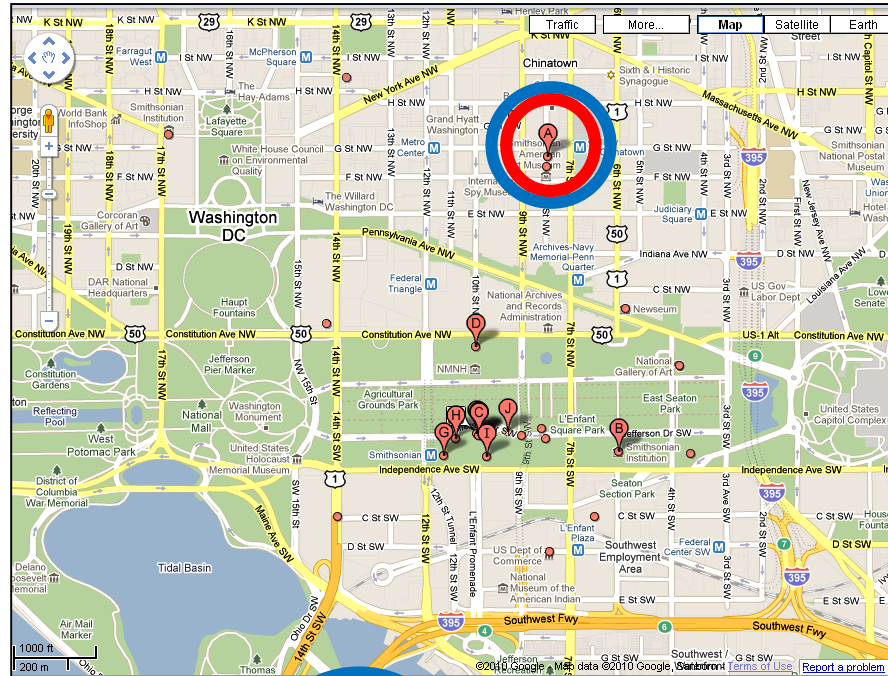
Briana Zavadil White
Head of Education
NPG

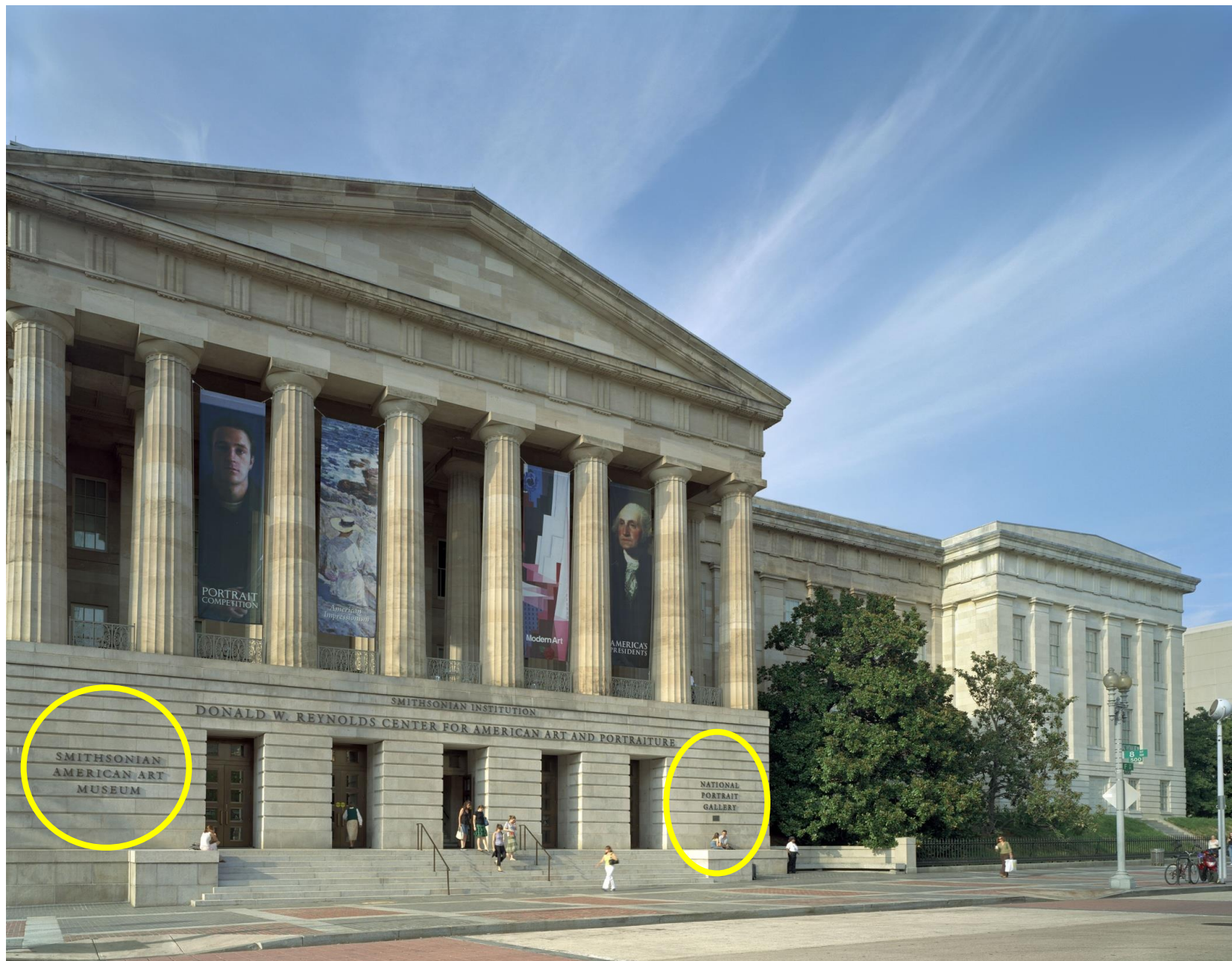


Anne Showalter
Digital Interpretation Specialist
SAAM



Smithsonian Institution





SMITHSONIAN
AMERICAN ART
MUSEUM

SMITHSONIAN INSTITUTION
DONALD W. REYNOLDS CENTER FOR AMERICAN ART AND PORTRAITURE

NATIONAL
PORTRAIT
GALLERY

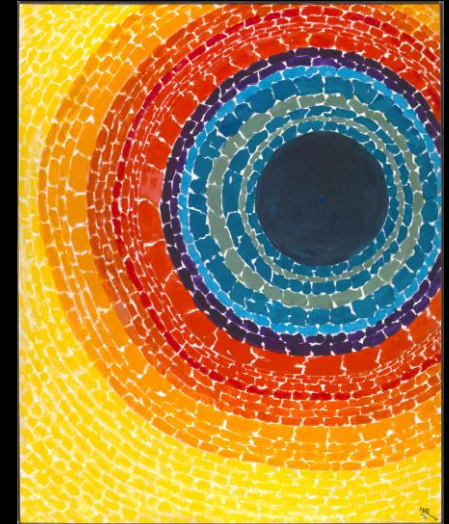
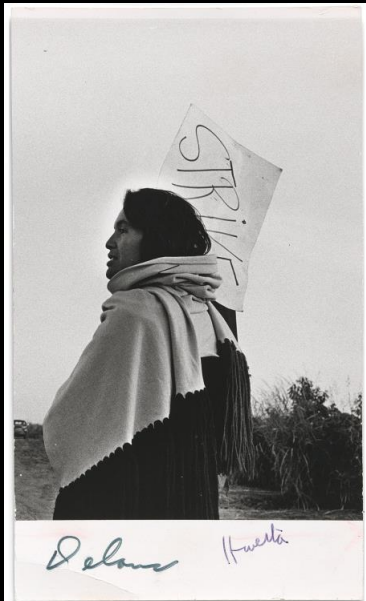
Smithsonian American Women's History Initiative



#BecauseOfHerStory

<https://womenshistory.si.edu>

Classroom Teaching Posters



Webinar Series Goals

- Explore how American art and portraiture can bring diverse women's stories into your classroom.
- Model strategies for engaging your students in close looking.
- Discover connections among American art, portraiture, and other disciplines.
- Brainstorm ideas to take back into your classroom.



Today's Essential Question



How have women led the way
in activism & social justice movements?

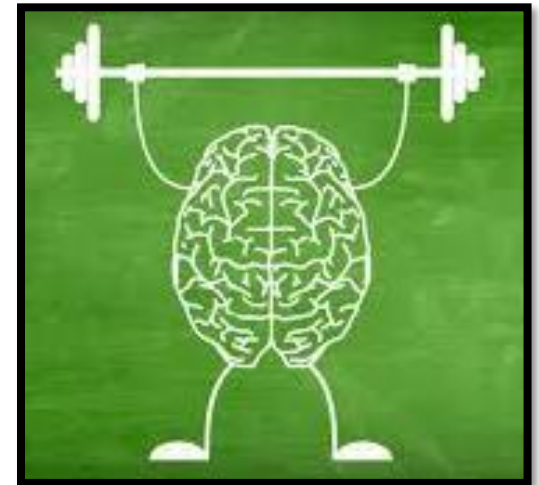


Warm-Up

How have women led the way in activism and social justice movements?

1. **Who** comes to mind?

2. What **movements** come to mind?





PROJECT ZERO

THINKING ROUTINES

What do you **see**?

What do you **think** about that?

What does it make you
wonder?



SEE / THINK / WONDER

A routine for exploring works of
art and other interesting things

Project Zero | <http://www.pz.harvard.edu/>
Harvard Graduate School of Education | CC BY-NC 4.0



See

Think

Wonder



Jaune Quick-To-See Smith, *State Names*, 2000
Smithsonian American Art Museum

Meet the Artist: Jaune Quick-To-See Smith



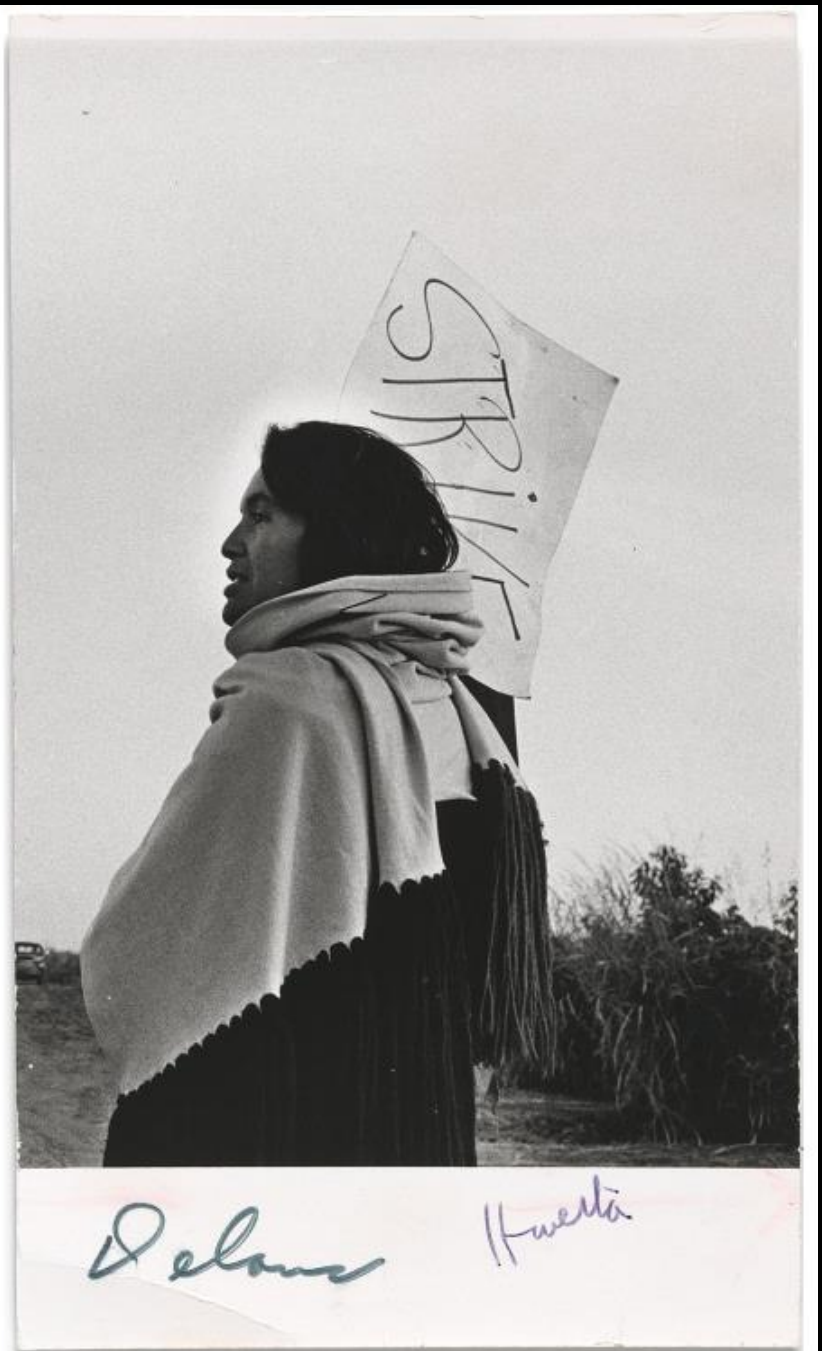


Jaune Quick-To-See Smith, *State Names*, 2000
Smithsonian American Art Museum

Elements of Portrayal

Jump In and Consider
Your Five Senses

Taste
Touch
See
Smell
Hear



Si se Puede! One Life: Dolores Huerta



<https://learninglab.si.edu/resources/view/1644428>



Delance

Huerta



THINKING ROUTINES

What do you **think** you know about this topic?

What questions or **puzzles** do you have?

What does the topic make you want to **explore**?



THINK / PUZZLE / EXPLORE

A routine that sets the stage for deeper inquiry

Project Zero | <http://www.pz.harvard.edu/>
Harvard Graduate School of Education | CC BY-NC 4.0



caption the image



Body and Soul: Gloria Steinem and her partner, Dorothy Pitman Hughes, demonstrate the style that has thrilled audiences on the Women's Liberation lecture circuit.

-“SHE” by Leonard Levitt, Esquire, October 1971



1971



2013



SUN MAD RAISINS

UNNATURALLY GROWN WITH
INSECTICIDES - MITICIDES - HERBICIDES - FUNGICIDES



SUN-MAID
NATURAL CALIFORNIA
RAISINS



NET WT. 1 OZ (28.3g)

9/1/00

"Sun Mad"

"The Sun-Maid"



1982



2008



What new ideas
has our discussion
of these images
given you about
women and activism?



How might you
use these ideas
in your classroom?



Additional Resources



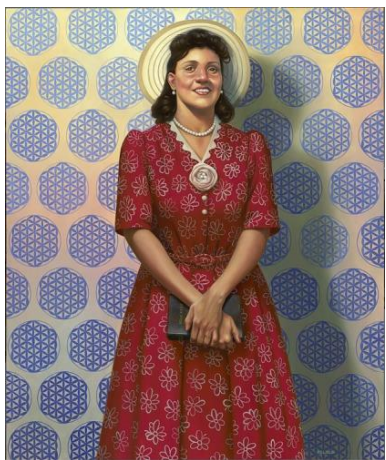
<http://learninglab.si.edu/q/ll-c/u5wXDR9LTw8vT8dh>

POSTERS!
by Nov. 1



Upcoming Webinars

WHO TELLS YOUR STORY? EXPLORING WOMEN AND IDENTITY



Henrietta Lacks by Kadir Nelson



Portrait of Mnonja by Mickalene Thomas

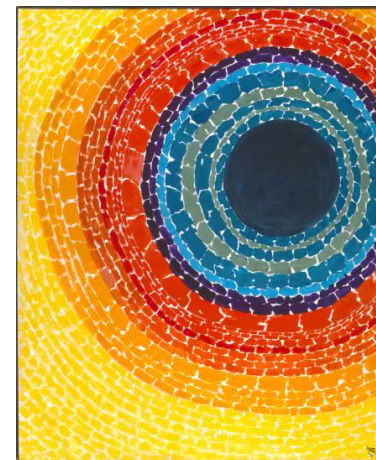
Thursday, November 7, 2019

5:00 – 6:00 p.m., EST

REMAKING THE RULES: EXPLORING WOMEN WHO BROKE BARRIERS



Lorraine Hansberry by David Attie



The Eclipse by Alma Thomas

Thursday, December 5, 2019

6:00 – 7:00 p.m., EST

Summer Teacher Institutes

TEACHING THE HUMANITIES THROUGH ART SMITHSONIAN AMERICAN ART MUSEUM



<https://americanart.si.edu/institutes>

LEARNING TO LOOK NATIONAL PORTRAIT GALLERY



<https://npg.si.edu/teacher-workshops/learning-look-summer-teacher-institute>

QUESTIONS?



Phoebe Hillemann
Teacher Institutes Educator
SAAM
HillemannP@si.edu



Briana Zavadil White
Head of Education
NPG
WhiteBZ@si.edu



Anne Showalter
Digital Interpretation Specialist
SAAM
ShowalterA@si.edu